

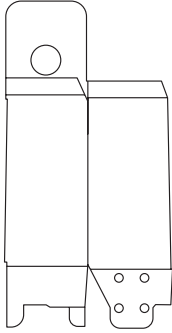


ASSEMBLY INSTRUCTIONS

Parts Identification (Structure)



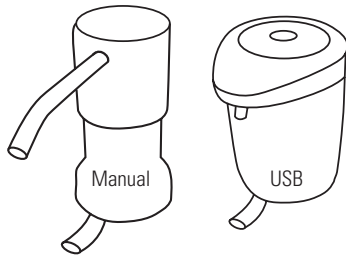
(A) Flat Box



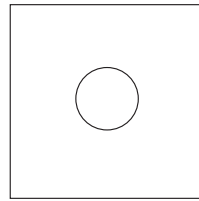
(B) Adapter



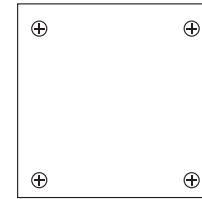
(C) Extender Tube



(D) Pump



(E) Support Square



(F) Mounting Plate

Assembly with Stand

- 1) Take flat box (A) and fold bottom to create flat base.
- 2) Take mounting plate (F) and place in bottom of box, lining up provided locking nuts with holes in bottom of box. Align with base of stand.
- 3) Use a wrench to secure to stand.
- 4) Place foam/gel gallon jug into box on flat surface. Open foam/gel solution by unscrewing top.
- 5) Screw adapter (B) to the top of the foam/gel jug.
- 6) Attach extender tube (C) to tube of pump (D).
- 7) Fold lid of (A) to create flat top surface.
- 8) Place support square (E) on top of box. Line up the openings.
- 9) Thread (D) with (C) attached through both openings, making sure tube goes into solution jug.
- 10) Twist pump clockwise until hand tightened. DO NOT OVERTIGHTEN.

Assembly without Stand

- 1) Take flat box (A) and fold bottom to create base.
- 2) Place foam/gel gallon jug into box on flat surface. Open foam/gel solution by unscrewing top. Set top aside.
- 3) Screw adapter (B) to the top of the foam/gel jug.
- 4) Attach extender tube (C) to tube of pump (D).
- 5) Fold lid of (A) to create flat top surface.
- 6) Place support square (E) on top of box. Line up the openings.
- 7) Thread (D) with (C) attached through both openings, making sure tube goes into solution jug.
- 8) Twist pump clockwise until hand tightened. DO NOT OVERTIGHTEN.

